

AFO 487 – Shelfmark alert messages

487.1 Introduction

When returning items, the system can display a message indicating that the item should be returned to a certain department or collection or to stock. This message is displayed if the call number contains a certain character code. Using this AFO 487, these codes and the descriptions of the relevant departments, collections and/or stock locations can be defined.

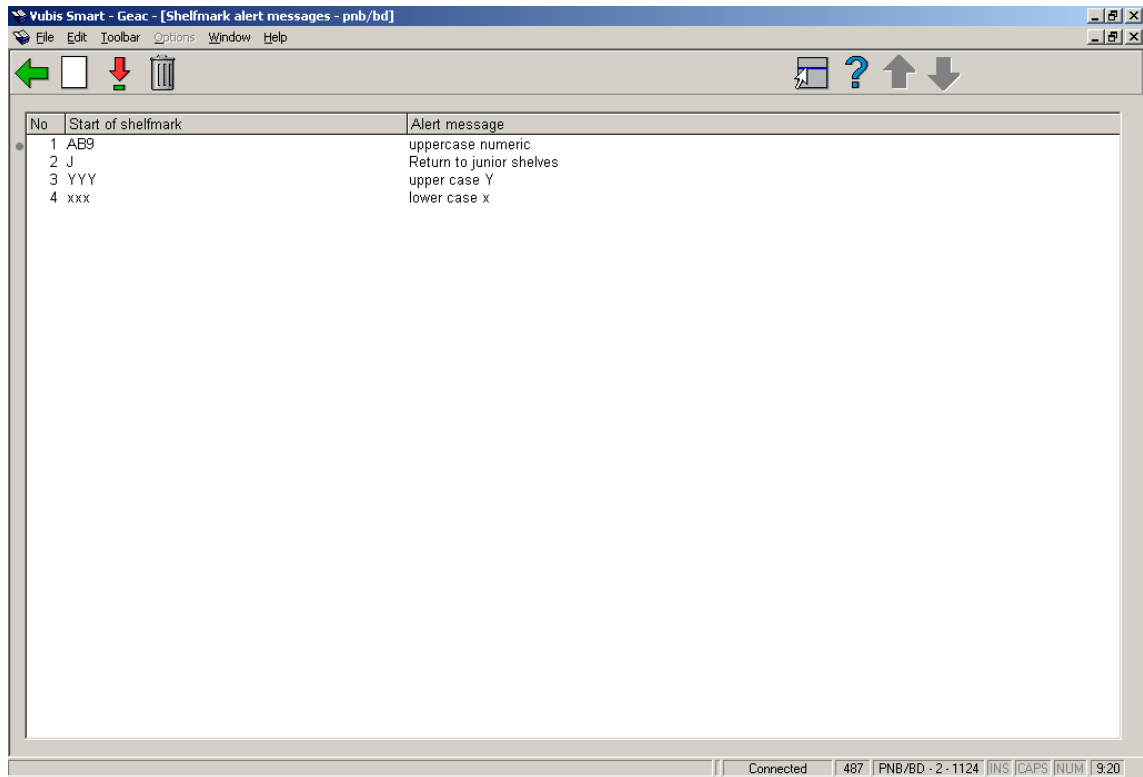
Example

All items to be returned to stock after being returned have '[MAG]' in their call numbers. The code to be defined is 'MAG' and the relevant description is 'To stock!'. When the item is returned, the message 'To stock!' is displayed

The system has a general parameter indicating whether or not this (relatively time-consuming) check is to be performed. This parameter is defined in AFO 481 'Main circulation parameters'. If you do not want to use this option, we recommend that the additional check be deactivated. If you set the general parameter to 0, entries made in this table (AFO 487) will be ignored (and no messages will be displayed).

487.2 Maintenance of shelfmark alert messages

After choosing this AFO an input screen will be displayed. If codes have already been defined an overview screen will be displayed.



Options on the screen

New: Select this option to enter a new code. See below.

Modify (+): Select a code and then this option to update the description for the relevant code.

Delete(+): Select a code and then this option to delete the code.

487.2.1 Enter a new code

After choosing **New** an input form will be displayed:

Fields on the screen

Start of shelfmark - enter the beginning, or all, of the shelfmark on which you wish to match. When an item is returned with a shelfmark which matches, or starts with, what is entered in this field, the Alert message will be displayed in Returns.

Alert message - the message that you want to appear in the **Location** column in Returns and click **OK** to save the new Shelfmark alert message.

- **Document control - Change History**

Version	Date	Change description	Author
1.0	unknown	creation	
2.0	November 2006	changed incorrect terminology (delivered as part of release 2.4.2 build 1 updates)	